

Child's First Name : _____

Family No :

--	--	--	--	--

School Name : _____

Nom de l'enseignant : _____

School No :

--	--	--	--	--

Questionnaire fill in at :

school

☐

home

☐

Interview Language :

2

Interviewer No :

--	--

Questionnaire Status :

Completed	1
Partially completed	2
Not completed	3

Interview Date :

--	--

Day

--	--

Month

--	--

Year

Paper Questionnaire Administered to the child (PQAC)

Québec Longitudinal Study of Child Development
QLSCD (E11) - Round 2008

In this questionnaire, we ask questions about you, your family, and how you feel about many other things. This is not a test. **There are no right and wrong answers.** Each child will have answers that are different from those of other children. Your answers will help the Government of Québec design programs and services for children across the province. This is why it is important you answer each question with what you really think.

In the first part, I will read you some sentences and you will give me your answer by saying them out loud to me. In the second part, we will read some sentences together, and you will write your answers by yourself in the booklet. That way I won't be able to know what your answers are.

For each question, make sure your answer is what you really think. Nobody in your school or your family will know what your answers are.

For consultation only

Section 1

Talking about what you are studying in school...

TO THE CHILD :

I am going to read you some sentences. Then, for each sentence, I am going to ask you to tell me yes or no whether it describes how you feel. If you say yes, I will ask you if it is *sometimes* yes or *always* yes. If you say no, I will ask you if it is *sometimes* no or *always* no. If you don't understand a sentence or a word in the sentence, please tell me.

- ♦ Interviewer : Read the statement, ask to choose his/her answer (yes/no) and probe for the precise answer (sometimes/always).

If : The child doesn't understand the statement : Circle "0"
The child cannot decide between yes or no : Circle "3"

No		Child understands but doesn't know	Yes		Child doesn't understand the statement
Always No	Sometimes No		Sometimes Yes	Always Yes	

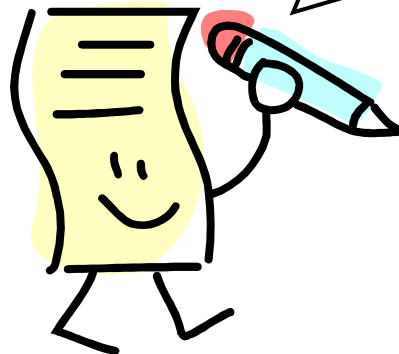
1. I have always done well in <u>reading</u> .	1	2	3	4	5	0
2. I like <u>reading</u> .	1	2	3	4	5	0
3. <u>Reading</u> interests me a lot.	1	2	3	4	5	0
4. <u>Reading</u> is easy for me.	1	2	3	4	5	0
5. I <u>read</u> even when I am not obliged to do so.	1	2	3	4	5	0
6. I learn things quickly in <u>reading</u> .	1	2	3	4	5	0
7. I have always done well in <u>writing</u> .	1	2	3	4	5	0
8. I like <u>writing</u> .	1	2	3	4	5	0
9. <u>Writing</u> interests me a lot.	1	2	3	4	5	0
10. <u>Writing</u> is easy for me.	1	2	3	4	5	0

Continued on the next page...

No		Child understands but doesn't know	Yes		Child doesn't understand the statement
Always No	Sometimes No		Sometimes Yes	Always Yes	

11. I write even when I am not obliged to do so.	1	2	3	4	5	0
12. I learn things quickly in <u>writing</u> .	1	2	3	4	5	0
13. I have always done well in <u>mathematics</u> .	1	2	3	4	5	0
14. I like <u>mathematics</u> .	1	2	3	4	5	0
15. <u>Mathematics</u> interests me a lot.	1	2	3	4	5	0
16. <u>Mathematics</u> is easy for me.	1	2	3	4	5	0
17. I do <u>mathematics</u> even when I am not obliged to do so.	1	2	3	4	5	0
18. I learn things quickly in <u>mathematics</u> .	1	2	3	4	5	0

Now we are going to do the second part. Here is your booklet. Together we are going to read the questions and the possible answers. Don't forget that there are no right or wrong answers. The important thing is that you answer according to what you really feel.



Section 2

About you...

19. Now, let's talk about your health. In general, would you say your health is...

♦ **Circle only one answer**

- Excellent? 1
 Very good? 2
 Good? 3
 Fair? 4
 Poor? 5

Section 3

About your feelings and your behaviour IN THE PAST 6 MONTHS...

20. Here are statements which that describe behaviour you might have had **IN THE PAST 6 MONTHS**. Choose the answer that best describes you.

♦ **Circle only one answer per line**

IN THE PAST 6 MONTHS...	Never or not true	Sometimes or somewhat true	Often or very true
a) ... you show sympathy to (you feel sorry for) someone who has made a mistake.	1	2	3
b) ... you can't sit still, you are restless.	1	2	3
c) ... you destroy your own things.	1	2	3
d) ... you try to help someone who has been hurt.	1	2	3
e) ... you steal at home.	1	2	3
f) ... you are unhappy or sad.	1	2	3
g) ... you get into many fights.	1	2	3
h) ... you are easily distracted. You have trouble sticking to any activity.	1	2	3

Continued on the next page...

IN THE PAST 6 MONTHS...	Never or not true	Sometimes or somewhat true	Often or very true
i) ... when you are mad at someone, you try to get others to dislike him/her.	1	2	3
j) ... you are not as happy as other people your age.	1	2	3
k) ... you destroy things belonging to your family or other young people.	1	2	3
l) ... if there is an argument, you try to stop it.	1	2	3
m) ... you can't concentrate, you can't pay attention.	1	2	3
n) ... you are too fearful or nervous.	1	2	3
o) ... when you are mad at someone, you become friends with another as revenge.	1	2	3
p) ... you are impulsive, you act without thinking.	1	2	3
q) ... you tell lies or cheat.	1	2	3

IN THE PAST 6 MONTHS...	Never or not true	Sometimes or somewhat true	Often or very true
r) ... you worry a lot.	1	2	3
s) ... you have difficulty waiting for your turn in games or group activities.	1	2	3
t) ... when another young person accident-tally hurts you, you assume that they meant to do it, and you react with anger and fighting.	1	2	3
u) ... when you are mad at someone, you say bad things behind his/her back.	1	2	3
v) ... you physically attack people.	1	2	3
w) ... you comfort another young person (friend, brother or sister) who is crying or upset.	1	2	3
x) ... you cry a lot.	1	2	3
y) ... you vandalize.	1	2	3
z) ... you threaten to hit people.	1	2	3

Continued on the next page...

IN THE PAST 6 MONTHS...	Never or not true	Sometimes or somewhat true	Often or very true
aa) ... you react in an aggressive manner when something is taken away from you (for example, hit, push or slap another child).	1	2	3
bb) ... you cannot settle to anything for more than a few moments.	1	2	3
cc) ... when you are mad at someone, you say to others: let's not be with him/her.	1	2	3
dd) ... you are nervous, highstrung or tense.	1	2	3
ee) ... you kick or hit other people your age.	1	2	3
ff) ... you steal outside your home.	1	2	3
gg) ... you are inattentive, you have difficulty paying attention to someone.	1	2	3
hh) ... you have trouble enjoying yourself.	1	2	3
ii) ... you help other people your age (friends, brother or sister) who are feeling sick.	1	2	3

IN THE PAST 6 MONTHS...	Never or not true	Sometimes or somewhat true	Often or very true
jj) ... you are defiant or refuse to comply with adults' requests or rules.	1	2	3
kk) ... after you have misbehaved, you don't feel sorry (feel guilty).	1	2	3
ll) ... punishment doesn't make you change your behaviour.	1	2	3
mm) ... you have temper tantrums or easily get angry.	1	2	3
nn) ... you tend to do things alone, to be by yourself.	1	2	3
oo) ... you react in aggressive manner when teased (for example, hit, push or slap another child).	1	2	3
pp) ... you encourage other children to pick on a particular child.	1	2	3
qq) ... you readily approach children you don't know.	1	2	3

Continued on the next page...

IN THE PAST 6 MONTHS...	Never or not true	Sometimes or somewhat true	Often or very true
rr) ... you are shy with children you don't know.	1	2	3
ss) ... you try to dominate other children.	1	2	3
tt) ... you are not interested in doing activities with other children.	1	2	3
uu) ... you react in an aggressive manner when contradicted (for example, hit, push or slap another child).	1	2	3
vv) ... you take a long time to warm up to children you don't know.	1	2	3
ww) ... you scare other children to get what you want.	1	2	3
xx) ... you prefer to play alone rather than with other children.	1	2	3

21. Now I am going to ask you some questions on certain things you may have done. **IN THE PAST 12 MONTHS** (the past year), about how many times ...

♦ **Circle only one answer per line**

IN THE PAST 12 MONTHS...	Never	Once or twice	3 or 4 times	5 times or more
a) ... have you stayed out later than your parents said you should?	1	2	2	4
b) ... have you stayed out all night without permission?	1	2	3	4
c) ... have you skipped a day of school without permission?	1	2	3	4
d) ... where you questioned by the police about anything they thought you did?	1	2	3	4
e) ... have you run away from home?	1	2	3	4

22. **IN THE PAST 12 MONTHS** were you part of a group that did bad things?

♦ **Circle "1" for Yes or "2" for No**

Yes 1

No 2

The next few questions are about your family, your friends, your school and certain behaviours you may have had **DURING THE PAST 12 MONTHS** (the past year). These questions may be surprising since they don't really concern most 10-year-old children. However, our surveys show us that many behaviours described in these questions begin to appear early in some children. Because we want to understand more about these behaviours, we think we need to ask these questions now, even if they only apply to a small number of children. **Don't forget that there are no right or wrong answers, and that all your answers will remain confidential and secret**

23. Circle the number of the answer that best matches what you think. **IN THE PAST 12 MONTHS...**

♦ **Circle only one answer per line**

	Never	Once or twice	Several times	Very often
a) ... have you threatened to hit someone in order to force them to do something they didn't want to do?	1	2	3	4
b) ... have you drunk a bottle of beer, a glass of wine or a glass of another alcoholic beverage when no adult was present ?	1	2	3	4
c) ... have you gotten drunk on beer, wine or other alcoholic beverages?	1	2	3	4
d) ... have you broken down a door or a window in order to get into a place and take something ?	1	2	3	4
e) ... have you threatened or roughed up other people to get what you wanted?	1	2	3	4
f) ... have you smoked one or more complete cigarette?	1	2	3	4
g) ... have you played cards or other betting games for money with a family member?	1	2	3	4
h) ... have you played cards or other betting games for money with someone who was not a family member?	1	2	3	4
i) ... have you received scratch tickets or lottery tickets (such as 6/49 or Banco) as gifts?	1	2	3	4
j) ... have you bet on sporting events (hockey games) or on skill games (such as billiards) for money ?	1	2	3	4

Section 4

About your parents...

24. Think about the mother (biological mother, step-mother, or other) whom you spend the most time with. Overall, how would you describe your relationship with her?

♦ **Circle only one answer**

Very close 1
 Somewhat close..... 2
 Not very close 3
 I'm not in touch with my mother 4

25. Think about the father (biological mother, step-mother, or other) whom you spend the most time with. Overall, how would you describe your relationship with him?

♦ **Circle only one answer**

Very close 1
 Somewhat close..... 2
 Not very close 3
 I'm not in touch with my father 4

26. For each of the following statements, use the choice that best describes the way your parent(s) (or stepparent(s), foster parent(s) or guardian(s)) in general have acted toward you **IN THE PAST 6 MONTHS**.

♦ **Answer these questions thinking of the father and the mother you indicated in Questions 24 and 25**

♦ **Circle only one answer per line**

IN THE PAST 6 MONTHS, your parent(s)...	Never	Rarely	Sometimes	Often	Always
a) ... want to know exactly where you are and what you are doing.	1	2	3	4	5
b) ... let you go out any evening you want.	1	2	3	4	5
c) ... listen to your ideas and opinions.	1	2	3	4	5
d) ... and you solve a problem together whenever you disagree about something.	1	2	3	4	5

Continued on the next page...

IN THE PAST 6 MONTHS, your parent(s)...	Never	Rarely	Sometimes	Often	Always
e) ... get angry and yell at you.	1	2	3	4	5
f) ... make sure you know you are appreciated.	1	2	3	4	5
g) ... hit you or threaten to do so.	1	2	3	4	5
h) ... find out about your misbehaviour.	1	2	3	4	5
i) ... seem too busy to spend as much time with you as you would like.	1	2	3	4	5

Section 5

About your well-being...

27. Circle the number of the answer that best describes your feelings and ideas **OVER THE LAST 2 WEEKS**. All your answers will stay secret and confidential. There are no right or wrong answers.

♦ **Circle only one answer per statement**

a. **OVER THE LAST 2 WEEKS,**

- I succeeded at almost everything I do..... 1
 I failed at a lot of things..... 2
 I failed at everything 3

b. **OVER THE LAST 2 WEEKS,**

- I hated myself 1
 I didn't like myself 2
 I loved myself 3

c. **OVER THE LAST 2 WEEKS,**

- I had no one that I could talk to..... 1
 I had some people that I could talk to..... 2
 I had many people that I could talk to..... 3

d. **OVER THE LAST 2 WEEKS,**

Everything that went wrong was my fault 1

Most things that went wrong were my fault..... 2

Things that went wrong were usually not my fault 3

e. **OVER THE LAST 2 WEEKS,**

I didn't feel alone 1

I often felt alone 2

I always felt alone..... 3

f. **OVER THE LAST 2 WEEKS,**

Nobody really loved me 1

I wondered if someone loved me 2

I was sure that someone loved me 3

g. **OVER THE LAST 2 WEEKS,**

I could not make decisions 1

I found it hard to make decisions 2

I found it easy to make decisions 3

h. **OVER THE LAST 2 WEEKS,**

I really felt left out of things 1

I felt a little left out of things 2

I didn't feel left out of things 3

Section 6

About you and your teacher...

Circle only one answer per line	Never or not true	Sometimes or somewhat true	Often or very true
28. You feel at ease to ask your teacher questions when there is something you don't understand.	1	2	3
29. Your teacher gets mad at you easily.	1	2	3
30. Your teacher congratulates you when you do well in something.	1	2	3
31. You like your teacher.	1	2	3
32. You can talk to your teacher, he/she listens and answers nicely.	1	2	3
33. You are afraid of your teacher.	1	2	3
34. Your teacher gives you too much homework.	1	2	3
35. Your teacher yells or swears at you.	1	2	3
36. Your teacher makes fun of you in a mean way.	1	2	3



Section 7

Sometimes there are children who tease others or who are mean with others...

37a. **SINCE YOU STARTED THIS SCHOOL YEAR**, how many times has another child in your school called you names or said mean things to you?

♦ Circle only one answer

Never 1

Once or twice 2

More often 3

37b. **IF IT HAPPENED AT LEAST ONCE**, was it done by one child only or by many children?

♦ Circle only one answer

Only one child 1

One child sometimes and many children at other times 2

Always many children 3

38. **SINCE YOU STARTED THIS SCHOOL YEAR**, how many times did it happen that a child at school didn't let you play with his or her group?

♦ Circle only one answer

Never 1

Once or twice 2

More often 3

39a. **FROM THE BEGINNING OF THIS SCHOOL YEAR**, how many times did it happen that a child at school pushed, hit or kicked you?

♦ Circle only one answer

Never 1

Once or twice 2

More often 3

39b. **IF IT HAPPENED AT LEAST ONCE**, was it done by one child only or by many children?

♦ **Circle only one answer**

- Only one child1
One child sometimes and many children at other times2
Always many children3

40. **FROM THE BEGINNING OF THIS SCHOOL YEAR**, how many times did it happen that some children in your school said bad things about you to other children?

♦ **Circle only one answer**

- Never1
Once or twice2
More often3

41a. **SINCE YOU STARTED THIS SCHOOL YEAR**, how many times did it happen that a child at school made fun of you, laughed at you?

♦ **Circle only one answer**

- Never1
Once or twice2
More often3

41b. **IF IT HAPPENED AT LEAST ONCE**, was it done by one child only or by many children?

♦ **Circle only one answer**

- Only one child1
One child sometimes and many children at other times2
Always many children3

42. **SINCE YOU STARTED THIS SCHOOL YEAR**, how many times did it happen that a child in your school forced you to give him/her something that belonged to you?

♦ **Circle only one answer**

- Never1
Once or twice2
More often3

Section 8

About you and your BEST friend in your class...

43. Can you write the **first name and the first letter of the last name** of your **BEST** friend in the class?

♦ **Write it down in capital letters**

First name: _____

First letter of last name: _____

44. Is she/he a ...

Boy 1

Girl 2

Please tell me his/her **first name**. It will be easier to read the questions, since they are about your BEST friend who is in your class, the one whose name you have just written.

45. Are you glad that _____ is your friend?

♦ **Circle only one answer**

A little 1

Medium 2

A lot..... 3

With your best friend in your class...

Never

**One or
twice**

**More
often**

46. **FROM THE BEGINNING OF THIS SCHOOL YEAR**, how many times have you argued or had a fight with _____ (best friend's first name)?

1 2 3

47. **FROM THE BEGINNING OF THIS SCHOOL YEAR**, how many times did you and your friend do "bad things" (i.e., things that are not allowed) **together**?

1 2 3

48. When you wanted to do something bad, did your best friend _____ say that this was funny and tell you to go ahead and do it?

1 2 3

49. When you wanted to do something bad, did your best friend _____ say not to do it because he/she didn't like it?

1 2 3

50. **SINCE THE BEGINNING OF THIS SCHOOL YEAR**, how many times have you and your best friend **threatened to hit** another child when you were together?

1 2 3

Don't forget, we are talking about your best friend in your class

51. When you threatened to hit another child, did _____ (first name of your best friend) think it was funny and tell you to do it?

1 2 3

52. When you threatened to hit another child, did _____ (first name of your best friend) tell you not to do it because he/she didn't like it?

1 2 3

53. **SINCE THE BEGINNING OF THIS SCHOOL YEAR**, how many times have your best friend and you made fun of another child (called him/her names, said mean things to him/her)?

1 2 3

54. When you started making fun of another child, did _____ (first name of your best friend) think it was funny and tell you to do it or keep on doing it?

1 2 3

55. When you started making fun of another child, did _____ (first name of your best friend) tell you not to do it because he/she didn't like it?

1 2 3

DO YOU HAVE ANY COMMENTS?

When you finish this survey:

- ☺ put your questionnaire in the envelope;
- ☺ close the envelope;
- ☺ give the envelope to the interviewer.

Remember that Tel-Jeunes is available to help you at any time if you feel like you would like to talk to someone about a problem

TEL-JEUNES

www.teljeunes.com

1 800 263-2266

Thank you very much for your help!